

Supplementary Committee Agenda



Overview and Scrutiny Committee Thursday, 7th December, 2006

Place: Civic Offices, High Street, Epping

Time: 7.30 pm

Committee Secretary: Simon Hill, Senior Democratic Services Officer
email: shill@eppingforestdc.gov.uk Tel: 01992 564249

6. NEIGHBOURHOOD POLICING - PROGRESS REPORT (Pages 3 - 14)

The police presentation is attached

This page is intentionally left blank

WESTERN DIVISION

Epping Forest Neighbourhood Policing



taking a lead in making Essex safer

WESTERN DIVISION: Neighbourhood Policing.

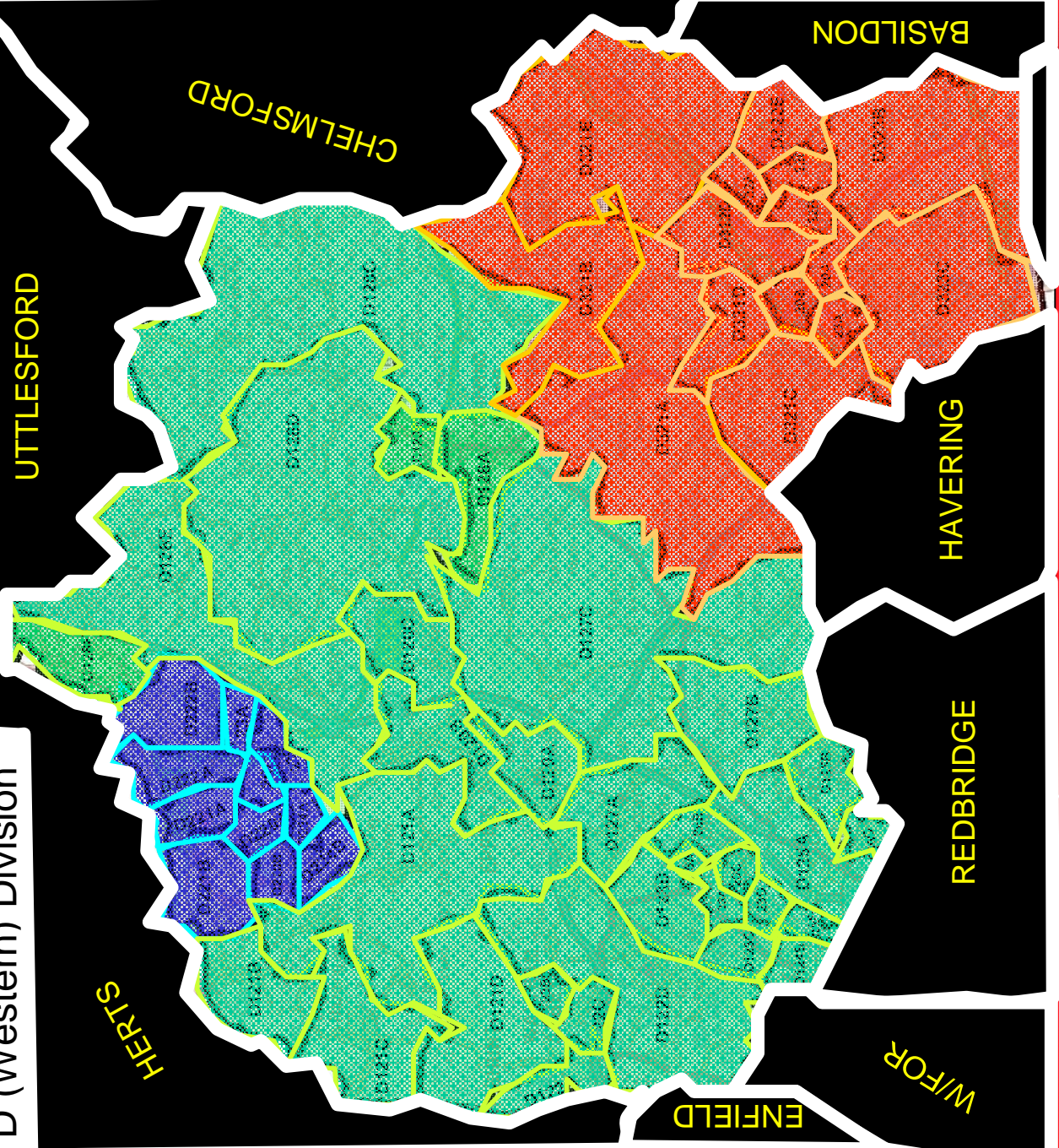
1. HMIC baseline assessment: 3 critical elements for neighbourhood policing

1. The presence of visible, accessible and locally known authority figures in neighbourhoods, in particular police officers and PCSO.
2. Community involvement in the process of identifying priorities and taking action to deal with them.
3. Targeted police activity and problem solving to tackle crimes and disorder which matter most to local people



taking a lead in making Essex safer

D (Western) Division



Harlow

Wards – 11

Neighbourhoods - 5

Epping Forest

Wards – 32

Neighbourhoods - 9

Brentwood

Wards – 15

Neighbourhoods - 4

Western

Total Wards – **58**

Total Neighbourhoods - 18

taking a lead

Epping District - 4 Stations

Loughton



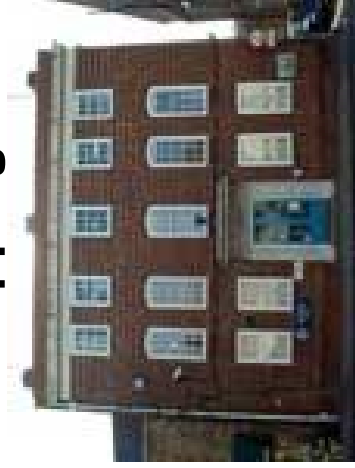
Waltham Abbey



Ongar

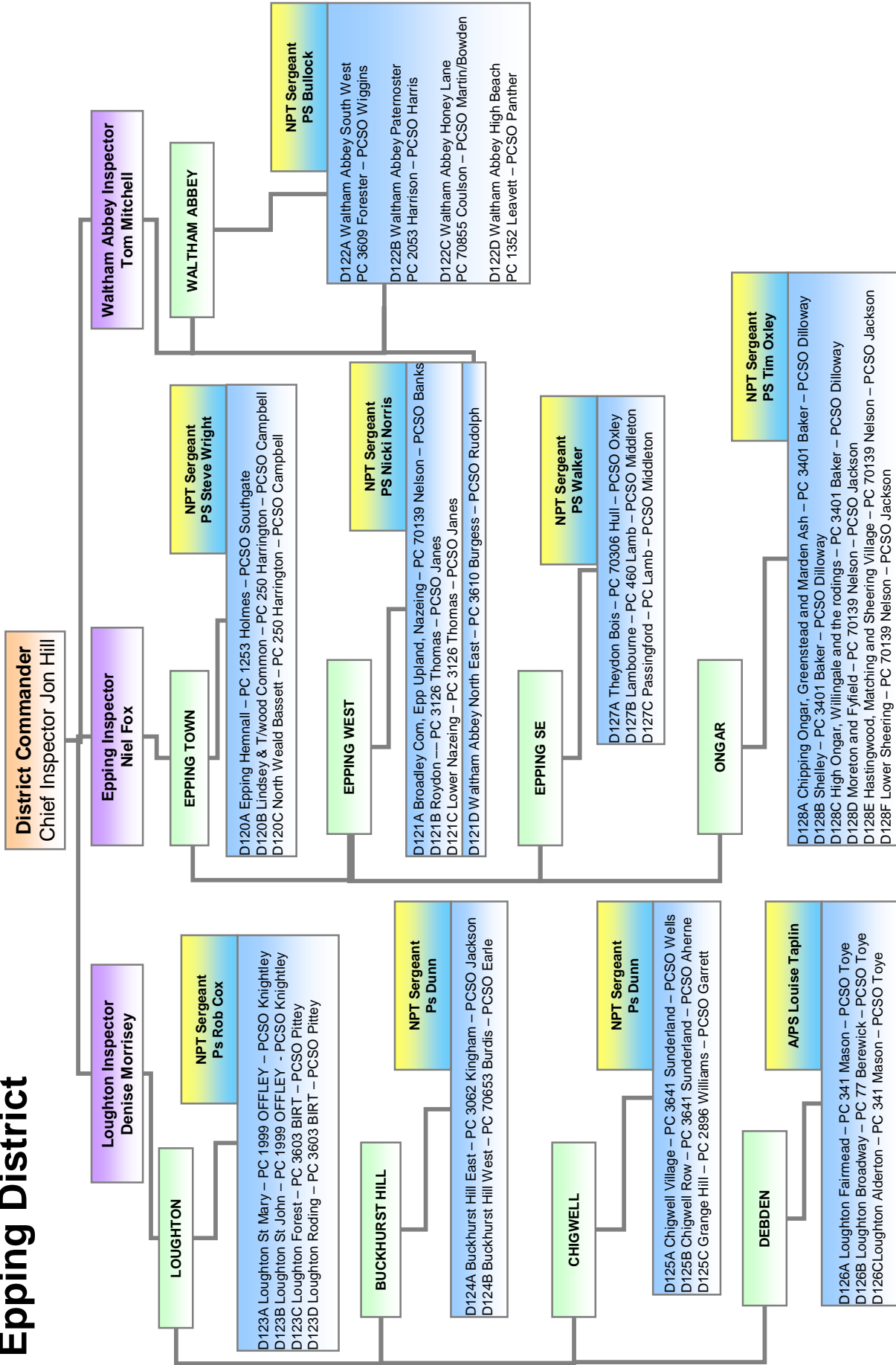


Epping



taking a lead in making Essex safer

Epping District



Epping Forest ANPR Reader

The statistics for the Loughton system alone, from 1st to 30th November 2006

Met Crimint	42	Dorset Intel	2
Met Disquals	45	CIFAS Credit Fraud List	2
Metpol Stolen VRM's	267	DVLA No Keepers	4295
Warwickshire Intel	5	DVLA No V.E.L.	1949
Leicestershire Intel	2	MIDAS No Insurance	1029
Northants Intel	5	Operation Liberal	1
Cambridge Intel	1	PNC Correction	13
Bedfordshire Intel	5	PNC Destroyed	10
Essex Football Intel	21	PNC Found	106
Essex Intel	186	PNC Information	1015
Essex Operation Blade	3	PNC Removed	198
Essex stolen plates	43	PNC Seen	4
Thames Valley Intel	4	PNC Stolen	58
City of London Intel	1		

The quantity of vehicles passing through the two cameras week ending 30/11/06 was 98,800, so an average month would see around 400,000 vehicles, from which 9312 hits were generated by the system. 9312 hits from 400,000 vehicles is 2.3% which is around the average figure for Essex since ANPR went live. In simple terms, one out of every fifty vehicles that passes the cameras will generate a hit.



taking a lead in making Essex safer



The Mobile Rural Police Office

The mobile office provides a point of contact for the rural communities on a fixed day and time.

The officers are able to provide accurate information of crimes in the area, give valuable crime reduction advice, to work together to help reduce any further incidents.

Other policing matters and local concerns can also be dealt with.

Help can be provided in setting up Neighbourhood watch groups and useful newsletters are provided.

If you require any further information about the 'Rural Police Office' please call 07968 354018

The Mobile Rural Police Office TIMETABLE



MONDAY

09:45 – 10:45 Abness Roding Church
11:00 – 12:00 Fyfield village Post Office
13:00 – 14:00 Willingale village Hall
14:30 – 15:30 High Ongar Post Office

TUESDAY

10:00 – 12:00 Roydon village Hall
13:00 – 15:00 Nazeing village Hall

WEDNESDAY

10:00 – 12:00 North Weald Village Hall
13:00 – 14:00 Lower Sheering Four Acres
14:10 – 14:55 Sheering High Street
15:00 – 15:30 Matching Tye Village Hall

THURSDAY

10:00 – 12:00 Theydon Bois village Hall
13:00 – 14:00 Stapleford Abbotts Tysea Hill Shop
14:10 – 14:55 Stanford Rivers
15:00 – 15:30 Toot Hill Green Man

FRIDAY

09:45 – 10:45 Abridge village Hall
11:00 – 12:00 Upshire Village Hall
13:00 – 14:00 Dobbs Weir Village Hall
14:30 – 15:30 Coopersale Shops

To reduce robberies and people coming into our area from the borders carrying weapons.

Epping Forest District officers used the Home Office portable body scanner to search people coming into the area by tube.

The scanner was so effective it could detect concealed packages such as cannabis.

The automatic number plate reader (ANPR) was also deployed in various 'hotspot' areas throughout the operation.



Essex Police held a successful operation in west Essex as they drove home a message that motoring offences will not be tolerated. Operation Hybrid focused on the Epping Forest district and ran from 10:00am on Thursday 2 November to 10:00am on Friday 3 November. The operation demonstrates the force's commitment to reducing the number of people who are killed and seriously injured on the county's roads.

The aim of the operation, as well as enforcement against those committing offences, was to raise awareness of the factors that contribute to crashes and loss of life, such as speed and defective vehicles.

Around 40 officers along with police staff and officials from the DVLA and VOSA were involved in the operation. The DVLA actively targeted vehicles that were not displaying valid Vehicle Excise License and this was run alongside the force's ANPR (Automatic Number Plate Recognition) Intercept team.

During the 24-hour period, 19 vehicles were either seized or clamped by the DVLA, six vehicles were seized by the police for no insurance, two stolen vehicles were recovered, 35 moving traffic offences were identified and tickets were issued. Six drivers were served with prohibition notices meaning they needed to remove their vehicle from the road immediately. In addition, six people were arrested for other offences including theft of motor vehicles, handling stolen goods and possession of a controlled drug.

Operational commander, Inspector Louise Beattie, said: "We are really pleased with the way the operation went. The figures show that in one district during one 24-hour period so many people are still willing to flout the law, by not taxing and insuring vehicles as well as not wearing a seatbelt or using a mobile phone whilst driving. These may seem like petty issues to the motorist, but the families of people killed as a result of these vehicles being driven on the road wouldn't agree. Operations such as these are crucial to educating drivers about the dangers, to saving lives and allowing residents in Epping Forest section to see that Essex Police take these issues very seriously."

WESTERN DIVISION

Epping Forest Neighbourhood Policing



END

This page is intentionally left blank